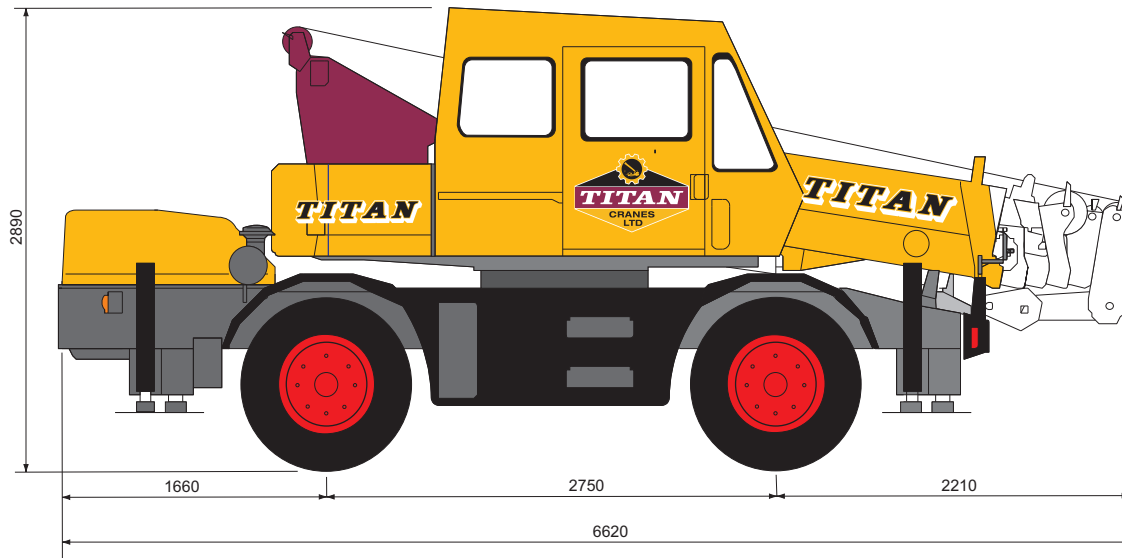
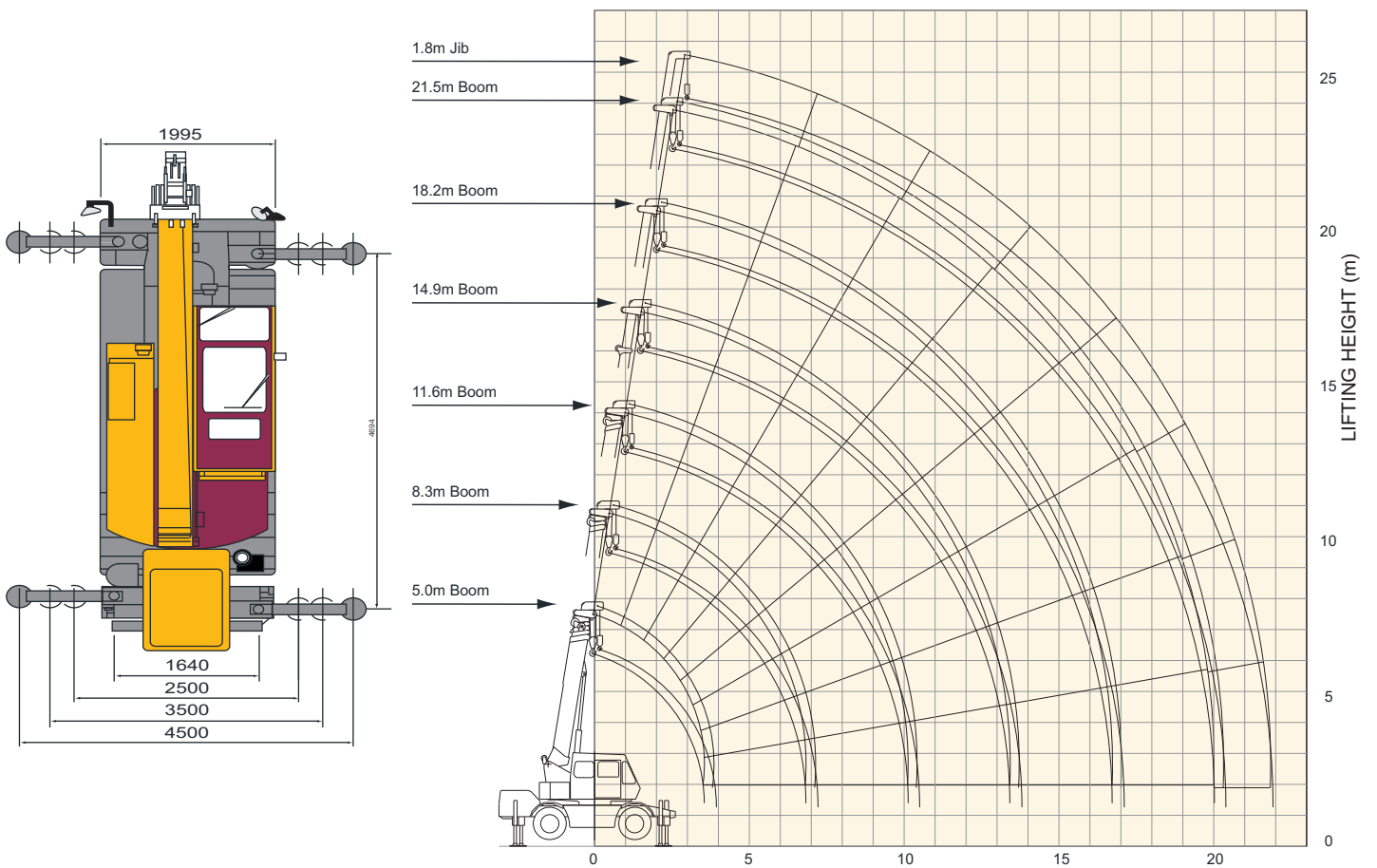


10 TONNE CITY CRANE



GENERAL DIMENSIONS

WORKING RANGE



10 TONNE CITY CRANE

LOAD RATINGS IN TONNES

360°

DIN 15019-2

Main boom

Work Radius (m)	Outriggers Fully Extended (4.5m) 360° Full Range						Outriggers Intermediately Extended (3.5m) Over Side					
	5.0m Boom	8.3m Boom	11.6m Boom	14.9m Boom	18.2m Boom	21.5m Boom	5.0m Boom	8.3m Boom	11.6m Boom	14.9m Boom	18.2m Boom	21.5m Boom
	1.5	10.00	4.90	4.90				10.00	4.90	4.90		
2.0	10.00	4.90	4.90	4.00			10.00	4.90	4.90	4.00		
2.5	10.00	4.90	4.90	4.00	4.00		10.00	4.90	4.90	4.00	4.00	
3.0	8.00	4.90	4.90	4.00	4.00	2.00	8.00	4.90	4.90	4.00	4.00	2.00
3.5	6.10	4.90	4.90	4.00	4.00	2.00	6.10	4.90	4.90	4.00	4.00	2.00
3.9		4.90	4.90	4.00	3.60	2.00		4.90	4.90	4.00	3.60	2.00
4.2		4.90	4.50	4.00	3.40	2.00		4.90	4.50	4.00	3.40	2.00
4.5		4.55	4.20	3.75	3.20	2.00		4.55	4.20	3.75	3.20	2.00
5.0		4.05	3.80	3.40	2.90	2.00		3.71	3.70	3.40	2.90	2.00
5.5		3.70	3.45	3.05	2.65	2.00		3.05	2.99	3.05	2.65	2.00
6.0		3.35	3.15	2.80	2.47	2.00		2.54	2.54	2.80	2.47	2.00
6.5		3.05	2.90	2.55	2.30	1.90		2.13	2.13	2.35	2.30	1.90
7.0			2.65	2.35	2.15	1.80			1.83	2.04	2.15	1.80
8.0			2.25	2.00	1.90	1.60			1.32	1.53	1.64	1.60
9.0			1.77	1.75	1.65	1.40			0.96	1.18	1.29	1.40
10.0			1.37	1.53	1.45	1.23			0.71	0.92	1.03	1.20
11.0				1.33	1.28	1.10				0.72	0.83	0.94
12.0				1.15	1.13	1.00				0.52	0.68	0.77
13.0				0.82	1.00	0.90				0.36	0.53	0.61
14.0					0.78	0.80					0.37	0.48
15.0					0.63	0.72					0.27	0.36
16.0					0.53	0.65					0.17	0.27
17.0						0.57						0.18
18.0						0.50						
19.0						0.35						
20.0						0.28						
Critical Boom Angle	-	-	-	-	-	-	-	-	-	-	-	30°
Standard Hook	for 10 ton (Hook Weight: 75kg)						for 10 ton (Hook Weight: 75kg)					
Parts of line	8			4			8			4		

Work Radius (m)	Outriggers Intermediately Extended (2.5m) Over Side						Outriggers Completely Retracted (Blocked on Vertical Cyls) Over Side					
	5.0m Boom	8.3m Boom	11.6m Boom	14.9m Boom	18.2m Boom	21.5m Boom	5.0m Boom	8.3m Boom	11.6m Boom	14.9m Boom	18.2m Boom	21.5m Boom
	1.5	10.00	4.90	4.90				8.00	4.90	4.90		
2.0	10.00	4.90	4.90	4.00			5.39	4.90	4.90	4.00		
2.5	7.00	4.90	4.90	4.00	4.00		3.56	3.40	3.35	3.16	3.17	
3.0	5.19	4.90	4.90	4.00	4.00	2.00	2.55	2.44	2.38	2.50	2.51	2.00
3.5	3.97	3.96	3.71	4.00	4.00	2.00	1.94	1.78	1.77	1.99	2.00	2.00
3.9		3.25	3.04	3.36	3.42	2.00		1.42	1.42	1.58	1.69	1.70
4.2		2.79	2.64	2.96	3.02	2.00		1.22	1.22	1.38	1.49	1.55
4.5		2.44	2.33	2.55	2.71	2.00		1.07	1.01	1.18	1.29	1.40
5.0		1.98	1.88	2.09	2.25	2.00		0.81	0.76	0.97	1.03	1.14
5.5		1.63	1.52	1.74	1.85	2.00		0.61	0.56	0.77	0.83	0.94
6.0		1.32	1.27	1.43	1.59	1.65		0.46	0.40	0.57	0.68	0.79
6.5		1.12	1.06	1.23	1.36	1.45		0.31	0.25	0.42	0.53	0.63
7.0			0.86	1.02	1.19	1.24				0.31	0.42	0.48
8.0			0.56	0.77	0.88	0.94						0.28
9.0			0.30	0.52	0.63	0.68						
10.0				0.31	0.42	0.53						
11.0					0.27	0.38						
12.0						0.23						
13.0												
14.0												
15.0												
16.0												
17.0												
18.0												
19.0												
20.0												
Critical Boom Angle	-	-	-	40°	45°	50°	-	-	47°	55°	62°	64°
Standard Hook	for 10 ton (Hook Weight: 75kg)						for 10 ton (Hook Weight: 75kg)					
Parts of line	8			4			8			4		